

HALLOWEEN PRANKS IN GREELEY COUNTY

Greeley County, Kansas

Written by Gweneth Linn

Consultant: Mrs. George (Virginia) Reid

** Additional information added about certain people mentioned in this story*

There were several Halloweens when the local kids stole the bell of the Methodist Church and hid it in the weeds along the creek. The bell was generally ruined before it was found. This has not happened for several years now.

One year they took someone's wagon apart and scattered it around over town. The owner of the wagon was so mad he tried to have the boys who did it prosecuted. There were some scared boys in town that morning. Another year, they took George Reid's* cow and put her in someone else's barn.

The Methodist Church had a pointed roof. Every year a farm implement, cultivator, harrow, or plow wagon was put on the church roof. They were always broken when removed from the roof.

One year Mr. Reid had just purchased a rubber tire surrey, which he kept in his barn. Mr. and Mrs. Reid had just gone to bed when Mrs. Reid heard the Surrey startup. She told Mr. Reid and he went out and stopped them just before they got it ready to put up on the church roof. They had started taking off the wheels so they could pull it up easily.

Each year you would find many outbuildings turned over. This is still done today (*in 1936*), but to a lesser extent. One person in town fixed outbuildings into a concrete foundation and for several years the pranksters tried, but could not turn them over. Finally, one year they got the city tractor, hitched onto the outbuildings, and turned them over that way.

Year after year, the pranksters would pile farm implements in the street in front of the business buildings. One year they weakened the high steeple that was on the courthouse by putting something very heavy on it. The next spring, the steeple blew off during a high wind.

There were more pranks played in the days before cars when people had more stock and more barns to disturb. It was normal to see signs taken down and placed in other places. You would find stop signs placed in front of business houses and business signs taken down and put up in front of private homes. One year they stole a sign that was in front of a Horace, Kansas café. They placed it in front of a Tribune residence. Tribune signs ended up in Horace.

One year the grade school building ended up decorated with signs.

One of the most disgraceful Halloween tricks ever heard of was in a county schoolhouse. Placed there were two goats, belonging to a person in the same district. The goats should have been well educated after that, for they ate the whole dictionary. While the cleaning of the schoolhouse, the students ended up with a short vacation.

Another year a cow was shut in a porch-like enclosure in front of Clem Wilson's* office. This porch had a cement rail on the north side and opened at both ends. Since the ends were blocked, the cow could not get out.

Another year, several barrels were piled in front of the high school. The next morning when the students went to school they could not get in. They waited a while for someone to get a bright idea. They tried the back doors but could not find a door unlocked. Finally, one of the boys thought he might be able to get in through a window. He did and then opened the door pushing the barrels away. That evening after school, some of the boys had to take the barrels back to Clettis Hoffman*, who was the owner of the barrels.

Once, the intersection between Greeley Avenue and Highway 27 was completely blocked with a combine and other farm implements. That same year large farm implements were placed on top of the printing shop.

This last Halloween several of the kids gathered up all the tin cans they could find and placed them in the yard of George Mathews.* This was done to aggravate Mr. Mathews.

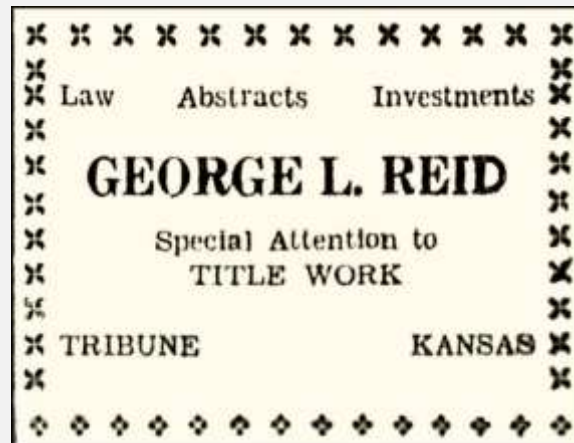
This year some of the boys decided to rotten-egg the high school principal's house. Next came the "peace bonds" for each of the young men. (*A Peace Bond is a court order requiring a person to keep the peace for a certain amount of time and obey other conditions.*)

Additional Information GEORGE L. REID

GEORGE L. REID, son of Samuel Lyle Reid (1831-1921) and Mary Robb (1836-1903), was born on 14 Feb 1864 in the state of New York. In 1879, he went to Kansas, living in Brown County, Kansas. There he worked as a teacher. Next, he moved to Holton, Jackson County, Kansas where he graduated from Campbell University. In 1887, George moved to Greeley County where he worked as the county attorney for several years. George married ELIZABETH MARIAN JONES (*Greeley County Consultant for this story*) on 2 Dec 1891 in Jackson County, Kansas. She was the daughter of Charles H. Jones (1830-1911) and Mary Elizabeth Tanner (1834-1906). She was born on 14 Apr 1865 in Cook County, Illinois. Elizabeth was a dressmaker in Tribune, and she had a Millinery shop in their home. She taught many of the young people in town how to play

the piano. She also enjoyed entertaining.

In 1911, George donated a quarter section of good Greeley County land to the Tribune Station for agricultural research to help cattle during the cold hard winters. George Reid was a loyal Republican. He was a charter member of the Presbyterian Church of Tribune, serving both as an elder and as a trustee. For twelve years, he was secretary of the County Sunday School Association and for twenty years, he was a Sunday School Teacher at the Presbyterian Church.



The Greeley County News (Tribune, Kansas) 10 Jun 1931

George passed away on 6 Dec 1937 in Tribune, Greeley County, Kansas. Elizabeth died there on 19 May 1940. Burial was at the Greeley County Cemetery in Tribune, Kansas.

George and Elizabeth had five children:

CHARLES JONES REID was born on 13 Dec 1893 in Tribune, Kansas, and was married to Josephine Kerr in 1916. She was born on 10 Feb 1896 in Barton County, Kansas. Charles passed away on 5 Dec 1974 in Topeka, Shawnee County, Kansas. Josephine died there on 2 Oct 1979. Four children were born in their marriage: Charles Robert Reid (1917-2008), Norma June Reid (1919-2007), Anita Marie Reid (1925-1992), and Karl Arthur Reid (1931-1969).

HAZEL M. REID was born on 10 May 1897 in Tribune, Greeley County, Kansas, and died there on 27 Jul 1897.

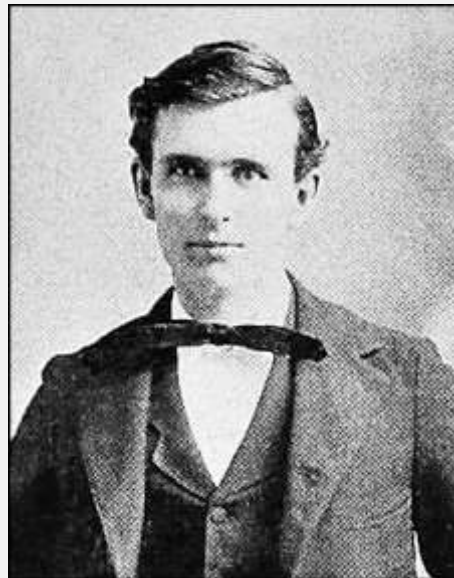
ELIZABETH A. REID was born on 9 Jun 1900 in Tribune, Kansas. She married Leonard E. Sutton on 6 Jun 1923 in Gypsum City, Saline County, Kansas. They lived in the Oklahoma City, Oklahoma area. Leonard was born in February of 1901 in Montgomery County, Kansas. They were divorced in about 1927. Elizabeth's second marriage was to Darwin Bruce Kissinger on 24 Sep 1934, in Kansas City, Wyandotte County, Kansas. Darwin was the son of Leonidas A. Kissinger and Martha Ann King. He was born in Beloit, Mitchell County, Kansas on 24 Sep

1908. Elizabeth died on 17 Jun 1980 in Sugarloaf Shores, Monroe County, Florida. Darwin died on 19 Feb 1999 in Pinellas Park, Pinellas County, Florida.

GEORGE LESLIE REID was born on 15 May 1902 in Tribune, Greeley County, Kansas. He married Lasca "Ilene" Thomas. Ilene was born on 11 Aug 1897 in Eagleville, Harrison County, Missouri. She passed away on 14 Sep 1961 in Washington, DC. George died on 12 Oct 1969 in the state of Virginia. George and Ilene had one daughter, Betty Lou Reid, born on 16 Aug 1924 in Topeka, Shawnee County, Kansas. Betty Lou was married to Wendell Ellsworth Shawn. She died on 27 April 2009 in Alexandria, Fairfax County, Virginia, and buried at the Arlington National Cemetery in Arlington, Arlington County, Virginia.

ALBERTINA EDITH REID was born on 3 Dec 1904 in Colorado. She married Eugene "Harvey" Seaman, son of Charles F. Seaman and Hattie Hunter, on 25 May 1922. Harvey was born on 28 Mar 1876 in Cincinnati, Hamilton County, Ohio. He died on 26 Jan 1929 in Norwood, Ohio. Four children were born in their marriage: Eugenia Hunter Seaman (1923-1991), Harriet Hunter Seaman (1924-1996), Eugene Harvey Seaman (1925-2005), and Robert George Seaman (1927-1968). Albertina's next marriage was to Perry H. Rice, son of Robert Rice and Lucy Roberts, on 3 May 1930 in Hamilton County, Ohio. Perry was born on 28 Apr 1902 in the state of Kentucky. He died on 18 Aug 1955 in Cincinnati, Ohio. In about 1956, Albertina married Dwight Nathaniel Reynolds. He died on 30 Apr 1970. Albertina passed away on 14 Sep 1983 in Fernandina Beach, Nassau County, Florida. Her buried was there at the Bosque Bello Cemetery.

Additional Information
CLEMENT L. WILSON



CLEMENT LEACH WILSON

CLEMENT LEACH WILSON, son of Anthony P. Wilson (1846-1924) and Mary Emeline Bolden (1850-1924), was born on 24 Apr 1874 in Nemaha County, Nebraska. In 1897, he graduated from Nebraska University. He married **MARTHA ELIZA BYERLY**, daughter of Dr. and Mrs. W. H. Byerly, on 20 Nov 1901 in Franklin, Franklin County, Nebraska. They moved to Colby, Thomas County, Kansas, where Clement practiced law until late 1905, when they moved to Tribune, Greeley County, Kansas. There, Clement served as town mayor for two terms. (1907 and 1909) He was very active in the town and worked in real estate and other town businesses. By 1916, he was Greeley County's attorney. Martha worked as a schoolteacher.

Martha died on 12 Oct 1949 and Clement on 17 Apr 1953. Their burial was at the Greeley County Cemetery in Tribune, Kansas.

Clement and Martha had two children:

LUCILE WILSON was born on 24 Feb 1905 in Kansas. She married Harry M. Liggett on 16 Oct 1924. Harry was born in 1901. In 1930, Harry and Lucile were living in Saline, Saline County, Kansas and by 1940, they had moved to Greeley County, Kansas. In 1950, they were living in Topeka, Shawnee County, Kansas. Harry passed away in 1951 and Lucile died on 1 Feb 1991. Burial for both was at the Mount Hope Cemetery in Topeka, Kansas. Harry and Lucile had one child, a son, Wilson Merrill Liggett, born on 6 Jun 1931 in Saline, Kansas. He passed away on 21 Dec 2006 in Overland Park, Johnson County, Kansas.

BERNICE WILSON was born on 8 Dec 1906 in Tribune, Kansas. She was married to Sylvester Giannetta on 26 Jul 1938 in Multnomah County, Oregon. Sylvester passed away on 3 Jul 1955 in Santa Barbara County, California. Bernice died there on 27 Jan 1970.

Additional Information **CLETTIS HOFFMAN**

CLETTIS NOEL HOFFMAN, son of Rayland Nelson Hoffman (1874-1933) and Grace Jane Herndon (1881-1917), was born 9 Aug 1901 in Ragan, Harlan County, Nebraska. In December of 1931, he married **MARGARET LOUISE SMITH**, daughter of Clyde Prentice Smith (1883-1955) and Anna Catherine Whitson (1885-1962). Margaret was born on 26 Feb 1907 in Partridge, Reno County, Kansas. Clettis worked as a farmer. He died on 15 Jul 1937 in Tribune, Greeley County, Kansas, and buried at the Freewater Cemetery in Ragan, Nebraska. Margaret's second marriage was to Ross Ellsworth Pile (1900-1958). She died on 8 Jun 2002. Burial for Ross and Margaret was at the Greeley County Cemetery in Tribune, Kansas.

Clettis and Margaret had three children:

The first two children, died at an early age: **KEITH HOFFMAN** (1933-1933) and **TWILA ROSE**

HOFFMAN (1934-1935). Their burial was at the Freewater Cemetery in Ragan, Nebraska, near their father, Clettis.

DARWIN HOFFMAN (*Records not available.*)

Additional Information GEORGE MATHEWS

GEORGE BAIRD MATHEWS was the son of Charles Fremont Mathews (1856-1925) and Elisabeth Baird Mathews (1860-1945). (*Her maiden name was also Mathews.*) George was born on 27 Apr 1896 in Greeley County, Kansas. In 1920, he was living with his parents and his occupation was schoolteacher. He continued to teach high school in Tribune. George married **EDITH MYRA PIERCE**, daughter of Ira Newton Pierce (1870-1934) and Mary Elizabeth Griffin (1872-1958), on 9 Jan 1927 in Little River, Reno County, Kansas. Edith was born on 4 Oct 1906 in Windom, McPherson County, Kansas. George died on 2 Apr 1977 at the Helmwood Resthome in Tribune, Kansas. Edith passed away on 10 Apr 1991 in Tribune. Their burial was at the Greeley County Cemetery in Tribune, Greeley County, Kansas.

George and Edith had five children:

EDITH ELISABETH MATHEWS was born on 24 Nov 1927. She lived in Towner, Kiowa County, Colorado. She married Dwayne Corgell Schmidt, son of Mr. and Mrs. Albert Schmidt on 25 Dec 1948 in Tribune, Kansas. Dwayne was born on 1 Apr 1926 and passed away on 4 Oct 2002. Edith died on 31 Jan 2009 at the Greeley County Medical Center in Tribune. Burial was at the Greeley County Cemetery in Tribune. They had two children, Steve Schmidt and Cheryl Ann Schmidt.

GEORGE B. MATHEWS, JR. was born on 10 Jun 1929. He died on 29 Jun 1996 in Denver, Colorado. His burial was at the Greeley County Cemetery in Tribune.

JOHN RICHARD MATHEWS (1934-1935)

VIRGINIA LEE MATHEWS was born on 25 Sep 1940. She never married. Virginia passed away on 18 Apr 2005. Her burial was at the Greeley County Cemetery in Tribune.

JAMES DOUGLAS MATHEWS was born on 1 Sep 1941. He lived in Tribune, Greeley County, Kansas until 1974, when he moved to Garden City, Finney County, Kansas. There, he married Sondra Lynn Ray on 14 Jan 1975. James was active in the Masonic Lodge and the Tribune Order of Eastern Star. He died at St. Catherine's Hospital in Garden City on 12 Aug 1976. The cause of his death was by an electrical shock. His burial took place at the Greeley County Cemetery. They had two children, Douglas James Mathews and Audra Michelle Mathews. Both lived in Pomona, California.